

TOUCH II

7" touchscreen, user-friendly, programmable
 USB Connection: PC software free of charge
 37 languages, continually expanded
 Upload videos to display, use for ads, instructions, etc.

G-FORCE EXTRACTION

25-40 lb capacity washers: 500G
 50-180 lb capacity washers: 450G
 230C-275C lb capacity washers: 350G
 Fully programmable



CONNECTIVITY

DomusConnect - IoT
 Provided at NO extra charge
 Manage your laundry anywhere, at anytime, 24/7
 Create programs, special promotions, access real-time reports, have service alerts go directly to technicians, and much more.



EFFICIENCY

Intelligent consumption, automatically adjusts water and chemicals
 Low energy and water consumption



VERSATILITY

Easily converts from OPL to COIN
 Electric or Hot Water
 Wetcleaning ready
 Extraction speed and water levels easily programmed for applications such as wetcleaning

ERGONOMICS

Reversible doors, standard
 Large doors for easy loading, unloading



MAINTENANCE

Hinged front control panel, easy and ergonomic access
 Technical menu, statistics for technicians
 Equivalent parts across all models

MORE INFO

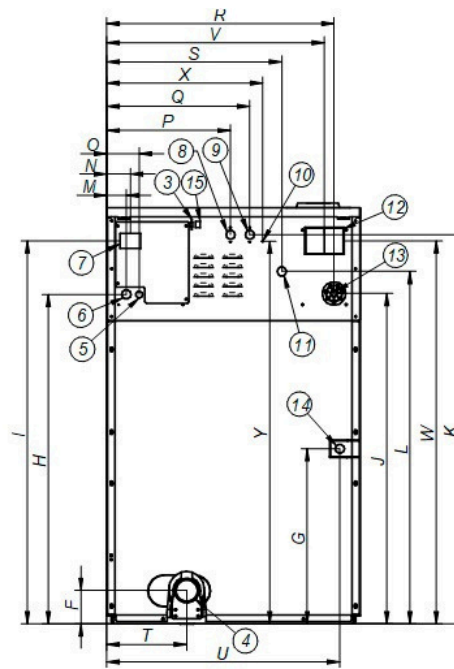
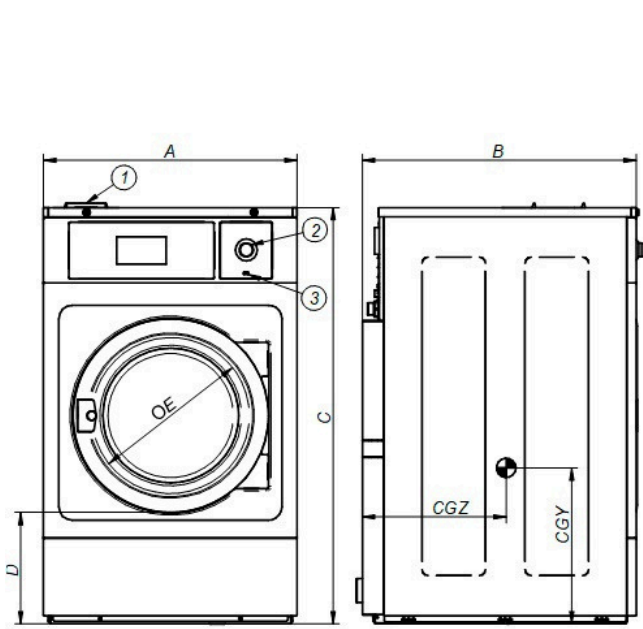
Soft mount washer, easy installation on upper levels and over basements
 Drum in stainless steel AISI 304
 CE , WRAS approved



OPTIONS

- DomusConnect communication kit
- Auto unlock kit for door (in case of power failure) - recommended for vended laundries
- AISI 304 Stainless Steel outer casing
- AISI 304 Stainless Steel top and front panels
- Silicon gasket
- 6 extra dosing signals available
- Normally closed drain valve
- Double drain kit
- Leveling feet
- Ready for EcoTank
- Extra dosing pump DB-1
- Weighing sensor system on feet
- Kit to transform E or HW to steam
- Plinth for mops with drawer, stainless or skinplate
- Stainless steel or skinplate plinth to level machines from top
- Stainless or skinplate plinth to align door base as 33.46"
- Tropicalized model: protected board (TOUCH II)
- Coin/token kit

DRUM	UNIT.	DHU-50 TOUCH II	
Capacity 1/9	Lb.	55.1	
Capacity 1/10	Lb.	48.5	
Volume	CU.FT	7.8	
Diameter	In	27.6	
Depth	In	22.1	
GENERAL DETAILS			
Washing speed / Spinning speed	r.p.m.	47/1071	
G Factor	-	450	
Maximum force transmitted	KN	4.12 ±1.4	
Frequency-dynamic force	Hz	16	
Noise level	dB	<70	
Coin laundry version	-	Yes	
Double drain	-	Opt.	
Weighing system / Tilting door	-	Opt./No	
SLUICE option	-	No	
DOOR			
Height center door / Height door	In	30.1/17.7	
Diameter	In	18.1	
POWER			
Motor	Hp	3	
Electric heating power	kW	12	
Total electric power (electric model)	kW	12.75	
Total electric power (hw, steam model)	kW	2.2	
CONNECTIONS		E	HW/S
Voltage 208-240/60/1~ + G	Nº x AWG / A	3 x 10 / 70A	3 x 14 / 15A
Voltage 208-240/60/3~ + G	Nº x AWG / A	4 x 8 / 40A	-
Voltage 440-480/3 ~ + G	Nº x AWG / A	4 x 10 / 30A	-
Steam inlet (Steam model)	inch	1/2"	
Maximum steam consumption (Steam model)	Kg/h	12	
Water inlet	inch	3/4"	
Water main pressure	Kgs/cm ²	2-4	
Maximum water consumption*	Gal/h	31.2*	
Drain	mm/inch	3"	
Drainage capacity	Gal/min	52.8	
DIMENSIONS / PACKING DIMENSIONS			
Net Width/Gross width	In	34.80/37.2	
Net Depth/Gross depth	In	39.49/43.9	
Net Height / Gross height	In	55.31/66.2	
Net weight / Gross weight	Lb.	793.8/889.7	
Volume	Ft ³	62.5	



1. Soap dispenser
2. Emergency stop
3. USB port
4. Drain
5. Electric connection to liquid soap pumps
6. Electrical connection
7. Main switch
8. Auxiliary water inlet
9. Hot water inlet
10. Equipotential connection
11. Cold water inlet
12. Blur output / Water overload
13. Liquid soap connection
14. Steam connection
15. Ethernet port
16. Clean side light

	A	B	C	D	E	F	G	H	I	J	K	L	M	N	O	P	Q	R	S	T	U	V	W	X	Y	CGY	CGZ	
DHU-50	mm	884	1003	1405	450	460	125	380	1135	1303	1138	1322	1207	61	74	101	429	509	802	640	322	814	772	1303	569	1297	464	747
	inch	34.80	39.49	55.31	17.72	18.11	4.92	14.96	44.68	51.30	44.80	52.05	47.52	2.40	2.91	3.98	16.89	20.04	31.57	25.20	12.68	32.05	30.39	51.30	22.40	51.06	18.27	29.41