

# MDG52PN

MAYTAG® COMMERCIAL  
ENERGY ADVANTAGE™  
MULTI-LOAD DRYER



## LEGENDARY MAYTAG DEPENDABILITY

Maximizing your equipment investment for over a half-century.

## ENERGY-SAVING SOLUTIONS

Maytag built the first appliance ever to receive the ENERGY STAR® label. Today, we offer energy-saving laundry solutions for all commercial laundry needs—from highly efficient ENERGY STAR®-qualified washers to the most energy-efficient dryers ever from Maytag—to help you save money and build profits.

## MICROPROCESSOR CONTROLS

Advanced computer controls let you program drying cycles with desired drying times, temperatures and cool-down. Then select the cycle with the simple touch of a button.

## CAPACITY:

- 50-Lb. Capacity

## FOR YOUR CUSTOMERS:

- Extra-Large Door Opening with Dual-Pane Door Glass
- Time Remaining Digital Display
- Self-Diagnostic Microprocessor Controls

## FOR YOUR OPERATION:

- Owner-Programmable Single-Phase Reversing Cylinder
- Low BTU and Fast Dry
- Enhanced Insulation For Greater Efficiency
- Front Serviceable
- Large-Capacity Lint Drawer

## BUILT-TO-LAST™ FEATURES:

- Maytag® Exclusive Waterless Fire Suppression System
- Heavy-Duty Motors
- Permanently Lubricated Bearings
- Four-Point Roller Support System
- 3-Year Limited Warranty—All Parts Covered

LAUNDRY SOLUTIONS  
YOU CAN *DEPEND* ON.

visit [maytagcommerciallaundry.com](http://maytagcommerciallaundry.com)  
or call 800-662-3587



## OUR COMMITMENT TO DEPENDABLE QUALITY

At Maytag, we believe durable goods should remain just that. That's why every Maytag® product is constructed of the highest-quality materials and with the utmost in precision craftsmanship. It's also why we stand behind our equipment with solid service and support from our professional Maytag laundry suppliers. Simply put, when you choose Maytag® products, you ensure your peace of mind.



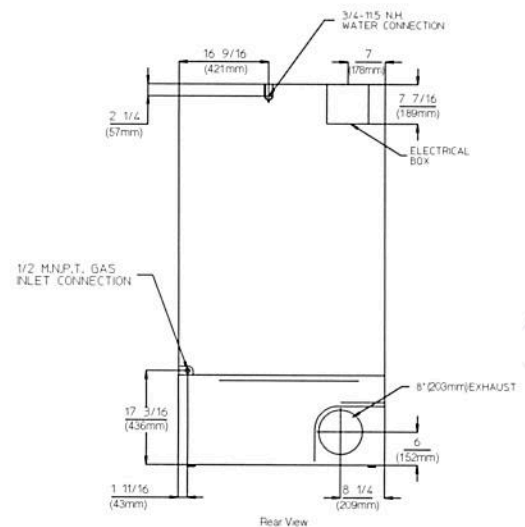
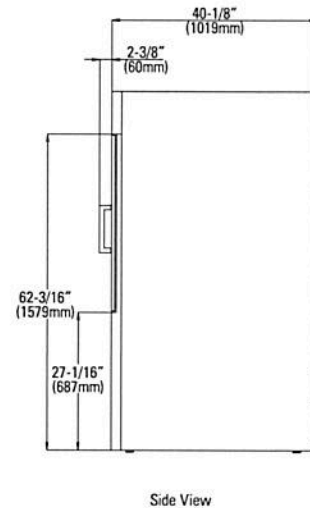
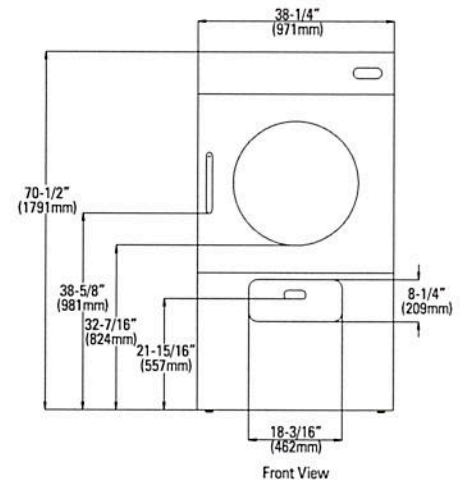
## MDG52PN MAYTAG® COMMERCIAL ENERGY ADVANTAGE™ MULTI-LOAD DRYER

### Maytag® Commercial Energy Advantage™ Multi-Load Dryer

#### MICROPROCESSOR NON-COIN

DRYER SPECIFICATIONS	
<b>MODEL</b>	<b>MDG52PN</b>
<b>CAPACITY</b>	
Lbs. (kg)	50 (22.68)
Cu. ft. (cu. m)	16.02 (.453)
<b>TUMBLER</b>	
Diameter—in. (mm)	37 (940)
Depth—in. (mm)	25.75 (654)
<b>MOTOR</b>	
Single-phase, thermoprotected against overload, auto-reset	✓
HP (kw) tumbler/blower	.75 (.56) / .50 (.37)
Tumble speed—RPM	40 ± 1.5
<b>AIRFLOW</b>	
Cfm (cmm)	600 (17.00)
<b>GAS RATING</b>	
BTU/hr. (kcal/hr.)	110,000 (27,720)
<b>GAS INLET</b>	
M.N.P.T. in. (mm)	1 inlet, 0.50 (12.7)
<b>VOLTAGE/BREAKER/FUSE REQUIREMENTS</b>	
Volts (Hz)	120 (60)
Amps	25
Export models—options available	220–480V/50–60Hz/1PH or 3PH
<b>COLOR</b>	
White	✓
Stainless Steel	✓
<b>APPROXIMATE WEIGHT</b>	
Crated—lbs. (kg)	640 (290)
Uncrated—lbs. (kg)	610 (277)
<b>DIMENSIONS</b>	
Height—in. (mm)	70.5 (1,791)
Width—in. (mm)	38.25 (972)
Depth—in. (mm)	40.13 (1,019)
Exhaust duct diameter—in. (mm)	8 (203)*
Door opening diameter—in. (mm)	27.38 (695)

\* Requires 8" (203 mm) material if venting horizontally; 10" (254 mm) if venting vertically.  
See specific instructions for proper installation.  
Because of continuous product improvement, Maytag reserves the right to change specifications without notice.



### MAYTAG® LIMITED WARRANTY 3 YEARS — ALL PARTS

For a period from the date of original purchase through the time listed above, the designated parts that fail in normal commercial use will be repaired or replaced free of charge for the part itself, with the owner paying all other costs, including labor, transportation and customs duty. Chemical damage is excluded from all warranty coverage. See complete warranty for details.